

***Recreation and Leisure Events***  
**Your resource to ongoing events here in Baltimore, Maryland**

**Weeks of February 1, 2012 through February 29, 2012**

MISSION STATEMENT: "The Arc Baltimore provides advocacy and high quality, life-changing supports to individuals and intellectual and developmental disabilities and their families."

***Happy snowflakes!***



# SPECIAL EVENTS

## **Black History Month in Baltimore**

February 1-29, 2012

Location: Reginald F. Lewis Museum

Black History Month is an annual celebration of achievements by black Americans and a time for recognizing the central role of African Americans in U.S. history.



Take advantage of special events, exhibits and programs all over the city this and every month.

## **FREE ADMISSION: Fourth Annual Reginald F. Lewis Museum High School Juried Art Show**

This year's theme, "Building Community through Civic Engagement," focuses on improving communities through civic or political actions. In partnership with the Maryland State Education Association.

## **Celebrate Black History Month at the B&O**

February 1-29, 2012

B&O railroad Museum

Mon-Sat. 10:00am-4:00pm

Sunday 11:00 am-4:00pm

Celebrate the contribution of African Americans to the railroad industry. For more information visits the B&O website. <http://www.borail.org/>

## **African Dancing and Drumming**

Enjoy an evening of African dancing and drumming, performed by the Nazu Dance Company

February 2 and 7, 2012 at 6:30 pm

Location: B&O Railroad Museum



### **From Fortune to Henrietta Lacks and Beyond**

February 6, 2012 at 7:30pm

Enoch Pratt Free Library- Govans & 1303 Orleans Street

Baltimore, MD 21231

This panel discussion will examine ethics in medical education, research, treatment, and practice and explore the parallels between story and that of Henrietta Lacks. For more information, call (410) 545-0702.

## ***ENRICHMENT***

### **Peabody on the court**

February 3, 2012 12:00pm – 1:00pm

600 N. Charles St., Baltimore

Baltimore, MD 21201

This concert features James Robert Lowe in a guitar performance, which continues a 1960s partnership with the Peabody Institute of the Johns Hopkins University, presenting a dynamic series of First Friday's noon concerts on the Sculpture Court.

### **Free Family Sundays at the BMA!**

Starting February 5, 2012-February 26, 2012

Every Sunday from 2pm-5pm

Location: Baltimore Museum of Art

10 Art Museum Drive, Baltimore, MD 21218



### **FREE ADMISSION**

Come participate in activities the entire family will enjoy. Activities include a hands-on-art-making workshop and an interactive family gallery tour. Enjoy the unique wonders of an embroidered treasure exhibition and design your own Central-Asian inspired textiles. For more information visit

<http://artbma.org>

## ***SOCIAL EVENTS***

### **Live Music at Lexington Market**

Every Friday and Saturday from 12-2 pm

Come enjoy **free live music** while you enjoy lunch at one of Lexington Market's popular eateries.

For more information, call 410-685-6169

### **Touch the enjoyment of sculpture**

Now-until April 15, 2012

The Walters Art Museum

600 N. Charles St, Baltimore

This groundbreaking focus show will explore the implications of tactile perception for enjoying sculpture.

# ONGOING OPPORTUNITIES

## **DROP IN PROGRAMS:**

### **Rolling Road Social Club**

Bloomsbury Community Center

Geared for individuals 25-50

When: Fridays, 7pm-9:30pm

Contact: Allen Spurr 410-859-8941 or 410-887-0959.

### **Drop-In at Church Lane Elementary**

When: Fridays, 7:30-9pm

Cost: \$2

Contact: Liberty Road Recreation Office

410-887-0700

## **STUDIO THIRTY 4 CLASSES FOR EVERYONE**

### **Various Dates**

Studio Thirty4 offers classes for everyone that will enhance social, cognitive, and physical development. Some classes are; creative movement, ballet, modern, hip hop, break-dance, belly dance, African dance...

Where: 623 West 34<sup>th</sup> St., Suite 105, 21211

Cost: Varies depending on classes

When: Most classes are evening

Contact: 443-768-7575

## **HEALTH & FITNESS**



### **Bowling Center Duckpins AMF**

5647 Baltimore National Pike

Catonsville, MD 21228

(410) 744-4000

Kitty states there is opportunity to set person in league with diverse population of bowlers. There is one group called the Allen Spurr Group.

Not formal league. Join this group Fridays 8pm-10pm. Team usually meets 1 time a month. All are welcome.

### **AMF Country Club Bowling Martins East**

9020 Pulaski Highway

Baltimore, MD 21220

1:00pm-3:00pm \$2.50 Big Balls

Saturdays Year Round

If interested, call Rockie Rene Davis (410) 663-3643 or Linda Farile at (443) 904-7808

### **Parkville Duckpin Lanes**

7607 Harford Road

Baltimore, MD 21234

(410) 444-6100

10:00am-12:00noon \$6.50

Duck Saturdays September-May. If you are interested in an inclusive league ask for Alma. She will assist.

**Charm City Yoga/Midtown Yoga**

107 Preston Street, 3000 Chestnut Avenue

Baltimore, Maryland 21202 #15

410-234-8967

Baltimore, Maryland 21211



**Baltimore Yoga Village**

3000 Chestnut Ave. Mill Center 21211

410 662-8626

[yoga@baltimoreyogavillage.com](mailto:yoga@baltimoreyogavillage.com)

[www.baltimoreyogavillage.com](http://www.baltimoreyogavillage.com)

**Bikram Yoga**

911 West 36th Street 21211

410-243-2040

[www.bikramyogahampden.com](http://www.bikramyogahampden.com)

[infobyh@gmail.com](mailto:infobyh@gmail.com)

**Greater Baltimore Yoga Center**

9628 Deereco Road,

Timonium, Maryland 21093

410-560-2980

[www.marylandyoga.com](http://www.marylandyoga.com)

**Locust Point Recreation Center**

Tuesday evenings 6-7pm \$5

Starts up March 5<sup>th</sup>

1627 E. Fort Avenue 21230 410-837-4423

### **Newman Center**

York Road directly across from Towson University

Class is held Mondays from 10-10:30 a.m.

This yoga class is specifically designed for people with MS or other chronic conditions. This is a very gentle yoga class which helps restore movement in people with physical limitations.

Contact: Bob at 410-960-4190

### **Linda Kalb, Yoga Therapist**

Class Options (All at Your Location): Reiki (hands on directed energy), Senior Exercise, and Meditation.

Hours of Operation: Mondays, Thursdays and Saturdays from 10am-4pm.

For more information please contact Linda Kalb @ 410-259-0348

### **Yoga-Lates (Yoga and Pilates) Class**

Chair Hatha Yoga, T'ai Chi, Pilates, Arthritis Plus, Yoga-lates (Yoga and Pilates) - designed to create physical fitness, endurance, strength, healthy posture, range of motion and over flexibility. Ages 18 and older. Participants must be able to follow verbal directions.

Where: Loch Raven Center (library room), 1801 Gen Keith Boulevard, 21234

Cost: \$15 per person

Contact: 410-887-5370 or 410-887-5319 (TT/Deaf)

### **Healthy First Saturday**

Begin each month on a healthy note with a visit to Port Discovery. Each Healthy First Saturday offers a variety of health related activities and information.

Port Discovery Children's Museum

35 Market Place

Baltimore, MD 21202

Phone: 410.727.8120

Website: [www.portdiscovery.org](http://www.portdiscovery.org)

Handicap accessible

## **AQUA AEROBICS**

The Baltimore City Department of Recreation and Parks have pool time available 12 noon -3pm. \$1 fee will be charged for each visit.

Contact: Mary Gardner: 443-315-7658

## **MARTIAL ARTS**

Monday evenings

Kickboxing for Women and Kiddie Kickboxing (ages 3-6) is also offered. For more information, please contact Master Quick at 443 829-1022 or Loch Raven Recreation Office at 410 887-5309

Cost: New Students \$85

## ***ENRICHMENT***

### **SIGN LANGUAGE CLASSES**

An eight-week basic sign language class for youth (ages 6 and older) and adults.

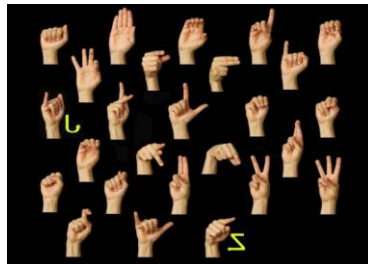
Where: Loch Raven Center

1801 Glen Keith Blvd

When: 7-8:15pm

Cost: \$35

Contact: 410-887-5370



### **TIME TO KNIT**

Get out your needles and those knitting projects you put away last spring. Join other knitters for camaraderie and to give and get help. Crochet and other needlework projects are welcome too. Suggested audience adults and seniors.

Where: Light Street Branch Library

1251 Light St. 21230

When: 6:45pm-7:45pm

**Cost: FREE**

Contact: 410-396-1096



### **MONDAY MORNING STORY TIME**

Barnes & Noble

620 Market Place Drive Bel Air, MD 21204

410-638-7023

Every Monday, 10:30- 11:30 until December 26

All ages welcome

## ***NATURE***

### **MEET THE CRITTERS:**

Come out and meet one of Irvin's resident animals up close and personal!

Where: 11201 Garrison Forest Rd. Owings Mills

When: Tuesdays, 2-2:30pm

Cost: **FREE**

Contact: 443-738-9200 or [www.explorenature.org](http://www.explorenature.org)

### **HORSE FARM VOLUNTEERS:**

Volunteers are needed mornings, afternoons, and evenings, or weekends. No previous horse experience is necessary.

Where: MCSE 2501 Fredrick Rd

Catonsville 21228

Cost: Your time

Contact: 410-418-4300

### **VOLUNTEERS NEEDED:**

TALMAR Gardens and Horticultural Center is always looking for new volunteers. We have plenty of positions available including transplanting in the greenhouse, planting flowers outside, office work, cutting and arranging flowers and much more!

Where: TALMAR Gardens and Horticultural Center, 1994 Cromwell Bridge Road, Baltimore, 21234

Contact: 410-825-2020 or [talmarinc@msn.com](mailto:talmarinc@msn.com)

### **HORTICULTURE WORKSHOPS:**

Workshops for the beginner to the advanced gardener will begin early this spring and will be taught by local master gardeners and experts in the field of both floriculture and horticulture.

Cost: varies

Contact: 410-825-2020 or [talmarinc@msn.com](mailto:talmarinc@msn.com)

### **ADOPT A HIGHWAY:**

Adopt a 1-3 mile stretch of highway, and help to keep Maryland liter free!

Baltimore County: Golden Ring 410-574-4511

Hereford County 410-329-6752

Owings Mills 410-363-1315

For more information, call State Highway Administration Adopt-A-Highway Coordinator 410-582-5568.

<http://www.sha.state.md.us/SHAServices/mapsBrochures/oc/adopt2.asp>

## ***FARMERS' MARKETS***

### **Baltimore Farmers' Market**

Underneath the Jones Falls Expressway at Holliday and Saratoga Streets

7am-12noon Every Sunday

### **Belvedere Square**

Belvedere & York Roads 410-464-2364

**John Hopkins Hospital Farmer's Market**

Jefferson Street pathway near Cancer Research Buildings

Thursdays 10am-2pm

410-955-9014

**University Farmer's Market (New Market)**

Plaza Park, Paca Street

Tuesdays 10:30am-2:30pm

410-328-2009

**Catonsville Farmers' Market**

Bloomsbury Community Center (108 Bloomsbury Ave.)

Wednesdays 10am-1pm [wedcatonsvillemkt@gmail.com](mailto:wedcatonsvillemkt@gmail.com)

**Green Spring Station Farmers' Market**

Falls & Joppa Roads Saturdays 2pm-5pm

**Kenilworth Farmers' Market**

798 Kenilworth Drive

Tuesdays 3:30pm-6:30pm

410-472-6764

**Cross Street Market**

Open daily, Cross Street between Market and Light streets.

**Lexington Market**

400 W. Lexington St.

410 685-6169

The nation's oldest market is home to Berger's.

**Rosenbloom Owings Mills JCC**

8am-1pm

3506 Gwynn Brook Ave. 21117

Lower parking lot phone 410 356-5200

**Waverly Farmers' Market**

7am- 12 pm

Saturdays year round 400 block of East 32<sup>nd</sup> St.

(410) 889-6388 or (410) 917-1496

[www.32ndstreetmarket.org](http://www.32ndstreetmarket.org)

***MUSEUMS AND ATTRACTIONS***

**Baltimore & Ohio Railroad Museum**

901 W. Pratt St. 21223

[www.borail.org](http://www.borail.org)

410-752-2490

**Baltimore Museum of Industry**

1415 Key Highway

410-727-4808 ext.132

11am-4pm

**Baltimore Museum of Art**

N. Charles & 31<sup>st</sup> Streets

10 Art Museum Drive.

443-573-1832

[www.artbma.org](http://www.artbma.org)

**FREE-** Wednesday thru Friday 11am – 5pm; Saturday & Sundays 11am – 6pm

**Free Family Sundays:** See works by master artists and make your own studio art

Join them for live music, performances, tours, and talks on Free First Thursday Evenings from 5pm-8pm

### **The Walters Art Gallery**

600 North Charles Street, Baltimore, MD 21201

410-547-9000

[www.thewalters.org](http://www.thewalters.org)

**FREE-**Wednesday thru Sunday 11am – 5pm; Friday 11am – 8pm

### **Jewish Museum of Maryland**

15 Lloyd St., Baltimore, MD 21202

**Admission is \$5.00 for JMM members/non-members: \$15.00.** 410 732- 6400 or  
[www.jewishmuseummd.org](http://www.jewishmuseummd.org).

### **Contemporary Museum**

100 West Centre St., Baltimore, MD 21201

Wednesday-Sunday Noon-5pm

410-783-5720

[www.contemporary.org](http://www.contemporary.org)

**FREE-** Wednesday thru Sunday Noon – 5pm

Suggested Donation other nights - \$5.00

### **The National Great Blacks in Wax Museum**

1601-03 East North Avenue; Baltimore, MD 21213

410-563-3404

[www.greatblacksinwax.org](http://www.greatblacksinwax.org)

Tuesday-Saturdays 9 a.m.-5 p.m.

Sunday: Noon-5 p.m.

**Reginald F. Lewis Museum**

830 E. Pratt Street, Baltimore, MD 21202

443-263-1800

[www.africanamericanculture.org](http://www.africanamericanculture.org)

General Admission-\$8.00/person

**American Visionary Art Museum**

800 Key Highway, Baltimore, MD 21230

410-244-1900

[www.avam.org](http://www.avam.org)

General Admission- \$11.00/person

**Fort McHenry National Monument and Shrine**

24 East Fort Avenue, Baltimore, MD 21230

410-962-4290

<http://www.nps.gov/fomc>

**Maryland Historical Society**

201 W. Monument Street, Baltimore, MD 21201

410-685-3750

<http://www.mdhs.org/index.html>

FREE-First Thursday of each month

**Johns Hopkins University**

4545 N. Charles St., Baltimore, MD 21210

Contact (410) 516-0341 or visit [www.museums.jhu.edu](http://www.museums.jhu.edu) for more information

**Homewood Museum Historic Art Walk**

Advance reservations required

Call 410-516-5589 to reserve

[www.museums.jhu.edu](http://www.museums.jhu.edu)

**School 33 Art Center**

1427 Light St.

[www.school33.org](http://www.school33.org)

410-396-4641

**Fells Point Maritime Museum**

1724 Thames Street, Baltimore, MD 21231

410-732-0278

Children 12 and under and seniors- \$3

Adults- \$4; Children 13-17 years, students with ID

<http://www.mdhs.org/explore/maritime/index.html>

### **Fire Museum of Maryland**

1301 York Road, Lutherville, MD 21093

(410) 321-7500

11am – 4pm Saturdays

Admission: \$6, \$5 for seniors & firefighters, \$4 for ages 2-12

More than 40 fire engines on display, fire history & fire-prevention lessons, and kid activities.

### **Hampton National Historic Site**

535 Hampton Lane, Towson, MD21286

410-823-1309, ext 226

<http://www.nps.gov/hamp/index.htm>

Free access to the farm, the family cemetery, slave quarters, carriages, state champion trees, and more.

### **Irish Railroad Workers Museum**

918-920 Lemmon St., Baltimore, MD 21223

410-669-8154

<http://www.irishshrine.org>

The museum is always available for visitors. A glass wall allows visitors to see inside the museum from the back yard. The museum is available most Saturdays for a guided tour of the inside of the museum plus a screening of a Baltimore Irish history video. All tours are free.

### **Maryland Institute College of Art**

1300 Mount Royal Ave.

(410)669-9200

[www.mica.edu](http://www.mica.edu)

### **Mother Seton House on Paca Street**

600 North Paca Street, Baltimore, MD 21218

### **Babe Ruth Museum**

216 Emory Street, Baltimore, MD 21230

410-727-1539 ext. 3015

Admission \$6, \$4 for seniors, \$3 for ages 5-16, free for members & children under 5.

### **Baltimore Streetcar Museum**

Sundays 12 -5pm

1901 Falls Road, 410 547-0264

### **Geppi's Entertainment Museum**

301 W. Camden St, Baltimore, MD 21201

Tuesdays- Sundays 10am-6pm

Geppi's Entertainment Museum holds multiple exhibits including "Out of This World Toys," which features a collection of Sci-Fi novelties from the 1950's and 60's.

[www.geppismuseum.com](http://www.geppismuseum.com)

## ***Transportation***

Baltimore, is easy to get to and easy to get around. Baltimore is easily accessible by plane, train and highway. Its close proximity to New York, Washington, D.C. and Philadelphia make it the ideal place to spend your next getaway. You'll save time getting here and save time getting around, so you can make the most of your trip.

### **Charm City Circulator**

Fast, frequent and **FREE** that's the trademark of downtown Baltimore's new shuttle bus system, the [Charm City Circulator](#). Visitors will find getting around Baltimore even easier with 21 sleek, hybrid buses

providing convenient and reliable transportation on three different routes. Another great thing, the Charm City Circulator runs every 10 minutes. From early mornings to late nights, seven days a week. To learn more visit the Charm City Circulator website.

<http://www.charmcitycirculator.com/>

### **By Rail**

Baltimore is easily accessible by both train and car. Light Rail service is available to downtown Baltimore, Timonium, and Hunt Valley from BWI Marshall Airport. The light rail is pretty affordable, one single trip cost \$1.60 cents and \$3.50 for a day pass. For schedules call **410-539-5000** or visit [mtamaryland.com](http://mtamaryland.com)

### **Water Taxi**

There's no better way to get around in Baltimore or to see the city than from the water. Baltimore offers a number of different ways to sail around town. For more information please visit <http://www.thewatertaxi.com/>.

## **FREE RESOURCES**

### ***LIBRARIES***

#### **Baltimore City:**

Brooklyn Branch: 410-396-1120

Canton Branch: 410-396-8548

Central Library: 410-396-5430

Cherry Hill Branch: 410-396-1168

Clifton Branch: 410-396-0984

Edmondson Avenue Branch: 410-396-0946

Forest Park Branch: 410-396-0942

Govans Branch: 410-396-6098

Hamilton Branch: 410-396-6088

Hampden Branch: 410-396-6043

Herring Run Branch: 410-396-0996

Light Street Branch: 410-396-1096

Northwood Branch: 410-396-6076

Orleans Street Branch: 410-396-0970

Patterson Park Branch: 410-396-0983

Pennsylvania Avenue Branch: 410-396-0399

Reisterstown Road Branch: 410-396-0948

Southeast Anchor Library: 410-396-1580

Walbrook Branch: 410-396-0935

Washington Village Branch: 410-396-1099

Waverly Branch 410-396-6053

**Baltimore County:**

Arbutus 410 887-1451

Catonsville 410 887-0951

Cockeysville 410 887-7750

Essex 410 887-0295

Hereford 410 887-1919

Lansdowne 410 887-5602

Loch Raven 410 887-4444

Mobile Library Services 410 887-7586

North Point 410 887-7255

Parkville 410 887-5353

Perry Hall 410 887-5195

Pikesville 410 887-1234

Randallstown 410 887-0770

Reisterstown 410 887-1165

Rosedale 410 887-0512

Towson 410 887-6166

White Marsh 410 887-5097

Woodlawn 410 887-1336

# ***PARKS & RECREATION***

## **BALTIMORE CITY DEPARTMENT OF RECREATION AND PARKS**

The Baltimore County Department of recreation and Parks and the local recreation councils offer a huge variety of recreational opportunities and services COUNTYWIDE! All programs are highlighted in a publication called Leisure Resources.

The newsletter is available online at [www.baltimorecountymd.gov/agencies/recreation/programdivision/therapeutic.html](http://www.baltimorecountymd.gov/agencies/recreation/programdivision/therapeutic.html).

If you do not have access to a computer, please feel free to call 410-296-2272 ext. 5349 and The Arc will mail you a copy.

## **CARROLL PARK**

1500 Washington Blvd

117 acres, rarely too noisy or crowded

## **CLIFTON PARK**

2801 Harford Road

English landscape garden on the grounds of the former estate of Johns Hopkins; features an old farmhouse that has been converted into an Italian villa with a tower and a view of the harbor and downtown

## **FEDERAL HILL PARK**

800 Battery Ave.

Overlooking the Inner Harbor and downtown cityscape; used as a lookout point during the Civil War and War of 1812. Features monuments of historic figures.

## **LEONE RIVERSIDE PARK**

1800 Covington St

Quiet atmosphere, benches and a gazebo; view of the Harbor on its northern side. Public swimming pool in the summer.

**LOCH RAVEN RESERVOIR**

9300 Loch Raven Drive, Parkville

Space for relaxing, hiking, mountain biking, boating, and fishing.

**PATTERSON PARK**

200 S. Linwood Ave

The city's oldest park, 155 acres including open fields, a pagoda, and a pool and athletic fields

**BALTIMORE COUNTY DEPARTMENT OF RECREATION AND PARKS**

**SANDY POINT STATE PARK**

Off U.S. Rte 50, Annapolis, at the western terminus of the Bay Bridge

Beaches, fishing, hiking, boating, crabbing on the bay

Cost: \$4 weekdays, \$5 weekends/holidays